

WE  
C  
T  
S  
U  
R

GREATER BOSTON  
LEGAL SERVICES



GREATER BOSTON LEGAL SERVICES  
2013 ANNUAL REPORT

F  
A  
I  
R  
N  
E  
S  
S



## OUR MISSION

Greater Boston Legal Services (GBLS) provides free civil (noncriminal) legal assistance to low-income people in Boston and thirty-one cities and towns to help them secure the most basic necessities of life. The assistance GBLS offers ranges from legal advice to full case representation, depending on client need.

Throughout its proud history, GBLS has remained committed to its mission of providing high-quality services to as many poor people as possible. Founded in 1900, it is the oldest and largest legal services program in New England. In 2013, GBLS served over 12,600 people.

To learn more about GBLS' major areas of work, please visit our website: [www.gbbs.org](http://www.gbbs.org).

Design: cjs design  
Printer: Recycled Paper Printing, Inc.

## SERVICE AREA

Greater Boston Legal Services serves the following cities and towns. Those towns marked with an \* are served only by the Elder, Health and Disability Unit.

Acton*	Maynard*
Arlington	Medford
Bedford*	Melrose
Belmont	Milton
Boston	Newton
Boxborough*	North Reading*
Braintree	Norwell
Brookline	Quincy
Burlington*	Randolph
Cambridge	Reading*
Canton	Revere
Carlisle*	Scituate
Chelsea	Somerville
Cohasset	Stoneham
Concord*	Stow*
Everett	Wakefield
Harvard*	Waltham
Hingham	Watertown
Holbrook	Weymouth
Hull	Wilmington*
Lexington*	Winchester
Lincoln*	Winthrop
Malden	Woburn



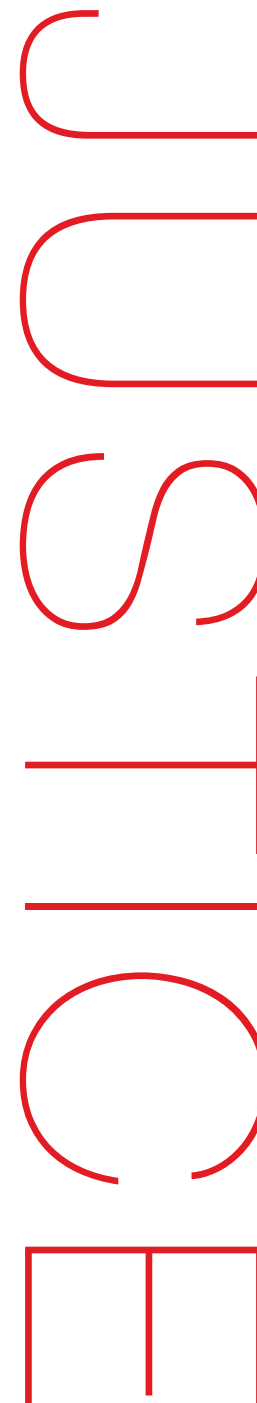
**During 2013**, GBLS partnered with our many supporters and Board and Corporation members to help ensure justice and fairness for thousands of low-income members of the communities we serve. Our staff, Fellows, loaned associates, AmeriCorps legal advocates, volunteers, and law student interns helped clients understand and defend their rights and brought about systemic changes that positively impact the lives of thousands of vulnerable Massachusetts residents. This report introduces you to some of those clients, describes some of our innovative partnerships and systemic advocacy successes, and acknowledges with heartfelt thanks the many generous individuals, law firms, agencies, and other partners whose support made all this possible.

Without your help, thousands more of the poorest, most marginalized members of our communities would remain defenseless after suffering injustice.

Thank you very much.

# TABLE OF CONTENTS

Family Assisted to Remain in Their Home after Unlawful Foreclosure	3
The GBLS Elder Abuse Prevention Project	4
Mother, Survivor of Domestic Abuse, Creates New Life with GBLS' Help	5
The CORI and Re-Entry Project	6
2013 Major Victories	7-8
2013 Awards and Honors	10
2013 Case and Client Statistics	11
Financial Statements	12
Legal Community Donors	13-16
Annual Fund Individual Donors	17-22
Matching Gifts of Annual Fund Donors	22
The Marshall Plan	23-24
Emerging Leaders Society	24
Harmonix Shareholders Gift to GBLS for Endowment	25
In-Kind Donations	26
Legacy Society	26
Commemorative Gifts	27
We Couldn't Do it Without You!	
Partners	28
Interns' School Programs	29
Blue Cross and Blue Shield Volunteers at Legal Advocacy & Resource Center	30
Volunteer Support	31
Corporation for National & Community Service — AmeriCorps	31
Board Members	32
Corporation Members	33
Staff	34



# Jury Trial Victory Allows Family to Remain in Their Home after Unlawful Foreclosure

Buying a home was the second proudest accomplishment of Ms. “Gerard” after having her children. A Haitian immigrant, she worked 70 hours a week to save enough money for a down payment to purchase a Malden duplex for her family with an interest-only, “no doc” loan from IndyMac. Unfortunately, Ms. Gerard did not know that these terms are considered a predatory form of lending since the owner secures no equity in their home.

Ms. Gerard was able to make the monthly mortgage payments by working two jobs with overtime, along with the downstairs unit’s rent and some assistance from her two adult daughters who lived with her. After 5 years in her home, all began to fall apart. A new owner of her company cut all overtime, and shortly thereafter, she was hospitalized a couple of times with heart disease, diabetes, and lung problems. She became permanently disabled, on oxygen 24 hours a day, with her daughters having to help with her care.

The Gerard family then applied for a loan modification based on the adult children’s income. IndyMac recommended that the modification be approved, but the Federal National Mortgage Association (Fannie Mae), the guarantor of the loan, decided to reject the approval and proceed with foreclosure.

Fannie Mae also has a punitive, “no rent to homeowners after foreclosure” policy which essentially dictates that homeowners must be evicted after foreclosure. Fannie Mae adamantly refused even to consider letting the family rent as a reasonable accommodation of Ms. Gerard’s disabilities.

Through a special project that GBLS and City Life/Vida Urbana (a community organization focused on preventing housing displacement and tenants’ rights) created with the support of the Oak Foundation, GBLS housing attorneys Dick Bauer and Lauren Song were called in to help.



Photo credit: Massachusetts Legal Assistance Corporation

The daughter of a hard-working homeowner who was the victim of predatory lending is pictured above. She said, “...the only reason we still have the house today is because of the assistance we received from Greater Boston Legal Services.”

The two attorneys undertook a two-year legal battle that challenged IndyMac’s predatory practices, targeted especially at communities of color and limited English proficiency, which resulted in the unjust displacement of this family. The Gerards’ case ultimately went to trial where a jury determined that both the mortgage terms and the foreclosure were in violation of Massachusetts law.

As a result of GBLS’ legal victory, the Gerard family can remain in their home and their mortgage loan will be reconsidered for modification. As Ms. Gerard’s daughter said, “...the only reason we still have the house today is because of the assistance we received from Greater Boston Legal Services.”



## The Elder Abuse Prevention Project of Greater Boston Legal Services

To address one of the most unacknowledged problems faced by senior citizens, Senior Attorney Betsey Crimmins and Senior Paralegal Maria Mendonça-Costanzo of GBLS' Elder, Health, and Disability Unit created the Elder Abuse Prevention Project in the Fall of 2013. The project assists some of the thousands of Massachusetts elders who are victims of financial abuse and exploitation from scammers, caregivers, and sadly, even family members.

Betsey's and Maria's cases have included adult children transferring their parent's home to themselves; a caretaker abusing a power of attorney that they coerced the elder to sign; an institutional representative payee taking financial advantage of a disabled elder; and a woman in her nineties who has been the repeated victim of scammers. In addition to assisting individual clients, the project focuses on prevention and raising the profile of this important issue.

The project is partnering with the town of Arlington to create a model community-wide response to preventing elder abuse which, hopefully, will be replicated in other communities.

As the elderly population continues to grow and people live longer, GBLS anticipates that the need for this unique and crucially-important project will also grow.



Photo credit: Linda Lank

This elder's niece, and his sister with whom he was living, made illegal bank withdrawals from his account. Paralegal Maria Mendonça-Costanzo helped him to open a new account, get direct deposit of his Social Security check, safeguard his pension paperwork, and is helping him to find housing.

A client said to his Elder Abuse Prevention Project paralegal,  
“I prayed this morning that the Lord would give me someone to help  
me because I do not know what to do, and here you are.”

## Mother, a Survivor of Domestic Abuse, Creates New Life with GBLS' Help

"Kavita" came to the United States from Bangladesh after she, her husband "Jayant", and their children won Green Cards in the U.S. government visa lottery. She looked forward to a better life in the U.S. for herself and her children since she was subjected to emotional and physical abuse by her husband in Bangladesh that resulted in several hospitalizations.

Things did not change in the U.S. When she got a job at a factory, Jayant made her give him all of her income and later told her she had to quit her job and stay at home. She was prevented from contacting her relatives after Jayant concealed a piece of plastic in the phone jack to prevent the phone from working. She wanted to attend English as a Second Language (ESL) classes but Jayant told her she couldn't go because she had to care for the children. She then arranged for daycare at her English class and went against Jayant's will, and he beat her and kicked her out of the house.

Kavita sought refuge in a battered women's shelter with her three youngest children. Her eldest son, then 16, chose to remain with his father. Jayant then filed for divorce.

The shelter staff referred Kavita to GBLS' Family Law Unit for representation in her divorce, to help her obtain a custody order, child support, and assistance in developing a safety plan. Attorney Lisa Locher took the case. Court hearings were especially challenging due to Kavita's limited English and the difficulty of obtaining a Bengali interpreter.

After extended representation by Lisa including a trial, Kavita's divorce was finalized with favorable terms including receiving child support, and she was also granted sole legal custody of the younger children.

Kavita, now fluent in English, is forging her new life in safety, protected from abuse and pursuing a degree at a community



Photo credit: Linda Lank

"Kavita", pictured above, is a domestic violence survivor and mother of four. Thanks to the representation of Family Law Unit attorney Lisa Locher, Kavita's divorce was finalized, she is receiving child support, she has sole legal custody of her youngest children, and she is safe from her former husband and abuser.

college. None of this would have been possible without GBLS by her side every step of the way, and your support of this critical work that helps Kavita and hundreds of other domestic violence victims every year. Thank you.



# Your Support Helps the CORI & Re-Entry Project's Clients to Rebuild Their Lives

People with criminal records and their families are too often trapped in a cycle of poverty, homelessness, and sometimes, hopelessness. In response, GBLS started its CORI & Re-Entry Project. Joblessness, underemployment, and lack of economic opportunity for people with criminal records — including those whose cases were dismissed — or a history of incarceration have created an economic crisis in Boston's communities of color. People with Criminal Offender Record Information (CORI) histories face discrimination and are deprived of jobs, housing, and opportunities for economic mobility. Mass incarceration and CORI have devastating consequences that perpetuate economic disadvantages and racial inequality.

The CORI & Re-Entry Project works to address these problems through individual and systemic legal solutions:

- Legal representation to seal CORI and juvenile records;
- Monthly on-site CORI legal clinics at Roxbury Court and bi-monthly clinics at Dorchester Court;
- Outreach and community legal education at community venues in collaboration with the Union of Minority Neighborhoods, Roxbury Community College, Dorchester Court probation officers, and other groups;
- Monitoring of employer, agency, and court compliance with CORI reform;
- Appeals and administrative and legal advocacy to ensure changes in the law are effectively implemented; and
- Advocacy at local courts to change practices that create barriers to sealing dismissed cases and other non-conviction cases.



Photo credit: Linda Lank

From l-r: CORI and Re-Entry Project attorneys Frank Curren, Susan Malouin, Kevin Canty, Ventura Dennis, and Lead Attorney Pauline Quirion. Missing: Volunteer attorney Jessica Lee.

The project focuses on the underserved African-American communities in Boston's poorest neighborhoods: Roxbury, Dorchester, and Mattapan. In 2013, the Project helped individuals with 615 issues stemming from their CORIs. GBLS views it as a matter of fairness to give former defendants with old or favorably-ending cases a second chance to rebuild their lives.

"Olivia" and "Henry" are two of the individuals Project attorneys helped in 2013.

"Olivia" had worked diligently through college at UMass and graduated with honors, only to be turned down for four separate positions due to her CORI that

consisted of a single dismissed incident. Olivia had a court hearing to seal it but was unsuccessful. She then turned to the CORI & Re-Entry Project for help. Her Project advocate was successful in obtaining the sealing and Olivia now has work in her field.

"Henry" is an elderly man with previous involvement with the court system when he was much younger. Now in his twilight years with mobility issues, Henry had been trying to find accessible, affordable housing. He is of very limited means and seeking public housing, but was gravely concerned he would not be approved due to his old convictions that had been the basis for his rejection from private housing. The CORI & Re-Entry Project found that his charges were so old, he could seal by mail, sparing him a court hearing and paving the way to be approved for housing.

# Far-Reaching Victories Achieved on Behalf of People with Disabilities and Underpaid Workers

**Your prior support will have an impact for many years to come. Thank you.**

## Helping Improve Access to Quality Medical Care and Services for People with Disabilities

Representing the Boston Center for Independent Living (BCIL) and several individuals with disabilities, GBLS attorneys Nancy Lorenz, Dan Manning, Alexa Rosenbloom, and Levi Sanders negotiated a comprehensive agreement with Boston Medical Center (BMC) to remove barriers to quality healthcare for patients with disabilities. Barriers included inadequate facilities and equipment, poor patient-provider communication, and lack of training concerning disability culture resulting in inferior medical care for GBLS' clients.

The hospital has committed to identify and remove architectural barriers; assess the

need for, and purchase medical equipment and devices that are accessible for people with disabilities; revise its training programs to include sessions on serving patients with disabilities; modify policies and procedures; develop a system for assessing patients' needs; meet those needs; and evaluate quality of care.

GBLS and BCIL are working closely with BMC to help the hospital become a national model for accessible care. Alexa Rosenbloom said, "Everyone involved is committed to improving care and services for patients with disabilities and making BMC a truly accessible facility for all patients."

Announcing the agreement, BMC President and CEO Kate Walsh stated, "Today, we are celebrating an agreement that will make sure that high standard applies to all our patients...and particularly our patients with physical disabilities."

Sergio R. Goncalves, the BCIL Chairperson as well as a BMC patient, thanked GBLS for "going above and beyond to create a partnership between Boston Medical Center and BCIL that will make it possible for people with disabilities to have a strong voice in getting quality healthcare for a better life."

## Landmark Settlement Agreement Improves Access to Benefits for People with Disabilities

In 2007, GBLS filed a federal class action lawsuit on behalf of three individuals with disabilities against the welfare department, the Department of Transitional Assistance (DTA), for disability discrimination. *Harper v. DTA* claimed people with disabilities were being inappropriately denied SNAP (Food Stamps) and cash assistance benefits in violation of the Americans with Disabilities Act and Section 504 of the Rehabilitation Act, due to DTA not providing reasonable accommodations and

its operating practices resulting in many people with disabilities being inappropriately screened out.

GBLS' Welfare Law Unit attorneys' extensive advocacy resulted in a federal court approved settlement in August 2013. Their case was built on the unit paralegals' and attorneys' years of work representing clients with disabilities who had been harmed by DTA. The agreement will ensure that people with disabilities and their

children will have access to critical food and cash assistance benefits they need to survive. Many of the changes mandated in the settlement agreement, such as improving readability and content of all written notices and forms, will benefit all clients, not just those with disabilities.

*Please visit <http://www.gbls.org/news/welfare/settlement-agreement-harper-vs-dta> for more information.*

## GBLS and Chelsea Collaborative Provide Vital Support in Major USDOL Lawsuit Resolved on Behalf of Underpaid Chelsea Workers

In a unique effort, GBLS and community partner the Chelsea Collaborative worked with the U.S. Department of Labor (USDOL) on a lawsuit that resulted in a federal court consent agreement in which 15 exploited low-wage workers were paid \$925,000 in back wages, liquidated damages, and compensatory and punitive damages.

GBLS and the Chelsea Collaborative gathered evidence and worked closely with the workers in bringing forward

their allegations of abusive treatment, major wage violations, and retaliation by their employer, Boston Hides & Furs Ltd. The workers described their 60-plus hours per week doing the dirty and backbreaking work of processing animal hides for shipping to tanneries, while constantly being subjected to threats, mockery, profanity, and insults. For this, most of the workers received a flat salary of \$50 per day — far below the minimum wage — not being paid overtime as required by law. Shortly

after the initial visit to the worksite by USDOL investigators, the underpaid workers were fired.

Throughout the litigation of the case, GBLS continued to work closely with USDOL. With GBLS' support and assistance, USDOL argued that because of the egregious threats and mistreatment, the usual limits on the recovery period should not apply. As a result, the workers ultimately were paid back wages and damages for a time period

substantially longer than the law typically allows. The company also had to pay \$50,000 in civil money penalties.

USDOL Wage and Hour Division District Director George Rioux and Regional Solicitor of Labor Michael Felsen praised “the cooperation and assistance provided by both the Chelsea Collaborative and Greater Boston Legal Services in reaching this favorable resolution for the workers involved.”

Ensure fairness for all in the justice system.  
Go to **[www.gbls.org](http://www.gbls.org)** and click on “Donate Now!”

## GBLS Staff Share Their Advocacy Work to Promote Economic Justice



Photo credit: Linda Lank

This delegation from Ireland and Northern Ireland visited GBLS as part of a tour organized by the Irish Institute at Boston College to support the peace and reconciliation process on the island of Ireland. The group included lawyers, elected officials, police officials, and representatives of development organizations. GBLS Litigation Director Dan Manning is second from the right, back row. They were primarily interested in GBLS' economic justice work, as they are dealing at home with the problems of unemployment, exploited workers, and employment discrimination.

# Congratulations to Our Staff and Volunteer Attorney!

## A selection of 2013 awards and honors

### **Hazel Hughes Award for community activism:**

Housing Unit Senior Attorney **Dick Bauer** and Senior Attorney **Ellen Shachter** of GBLS' Cambridge office (CASLS) were honored by the Somerville Community Corporation (SCC) for their roles on the Somerville Community Preservation Act campaign. The Act was voted into law with close to a 75% approval rate and imposes a property tax surcharge to be used for affordable housing, open space, and historic preservation.

**Public Service Peace-Building Award:** Family Law Unit Senior Attorney **Manisha Bhatt** was honored in October 2013 by the Domestic Violence Task Force (DVTF) of Community Action Programs, Inter-City, Inc. (CAPIC) in Chelsea. Manisha was recognized for demonstrating "outstanding work in educating, supporting and preventing domestic violence" and she was chosen among many nominations because of her "ongoing commitment to raising awareness of this important issue and ensuring all survivors are treated with compassion." Attorney **Bhatt** was also named by Governor Deval Patrick to the **Judicial Nominating Commission**.

**2013 John Phillip Sousa Award:** Senior Attorney **Deborah Filler** of GBLS' Cambridge office was selected by Somerville-Cambridge Elder Services to receive the award due to her "tremendous and energetic work as an advocate for older adults in the two cities and across the Commonwealth."

### **Massachusetts Lawyers Weekly 2013 Top Women of Law:**

Employment Law Unit Lead Attorney **Monica Halas** was named an honoree in August 2013. The award recognizes "women who have made great professional strides and demonstrated outstanding accomplishments in private practice, the corporate arena and social advocacy."

### **"Keepers of the Garden" community service award:**

GBLS Employment Law Unit Lead Attorney **Pauline Quirion** was honored by the Boston Housing Authority's Warren Gardens Resident Association at their "Unity Day" celebration in November 2013, for her work heading GBLS' CORI (Criminal Offender Record Information) & Re-Entry Project.

**2013-14 Women's Leadership Initiative:** Boston University Civil Litigation Program Clinical Instructor and Employment Law Unit Attorney **Sherley Rodriguez** and volunteer attorney and former Equal Justice Works Fellow at GBLS **Natacha Thomas** were selected by the Women's Bar Association to participate in the Initiative. This is a competitive program that provides mentoring and leadership development for women attorneys in Massachusetts who have been identified as rising stars in the profession. Their selection demonstrates their proven talent and promise as leaders.

### **Chelsea Collaborative Social Justice Award:**

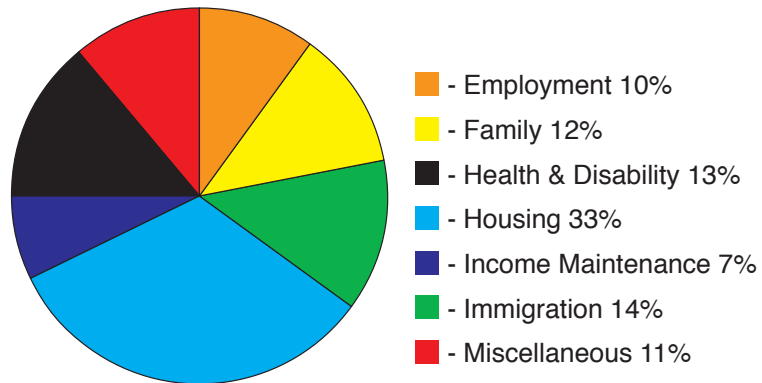
**Greater Boston Legal Services** was honored in December 2013 at the Collaborative's anniversary celebration. When it announced the award, the Collaborative stated, "Greater Boston Legal Services has been a key partner of the Chelsea Collaborative and together, we have worked successfully to achieve economic, social and environmental justice for so many in our community. In reflecting on our 25 years of organizing work and the tremendous partner GBLS has been in so many areas, we would like to acknowledge GBLS as a whole...."

**Community Partner of the Year: Greater Boston Legal Services** was honored by Year Up in July 2013 due to its "outstanding leadership in this community, helping guide young men and women from Year Up to reach their full potential and succeed. GBLS helps them navigate the challenging systems they encounter, as they try to bring stability to their own lives, as well as the lives of their families." Year Up is a program that provides urban young adults with the skills, experience, and support to reach their potential through professional careers and higher education.

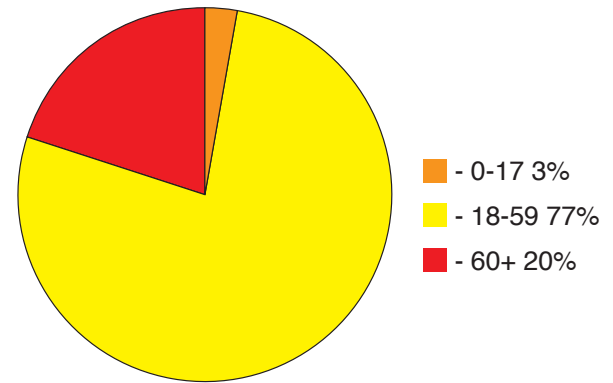
## DID YOU KNOW?

In 2013, GBLS assisted over 12,600 clients.

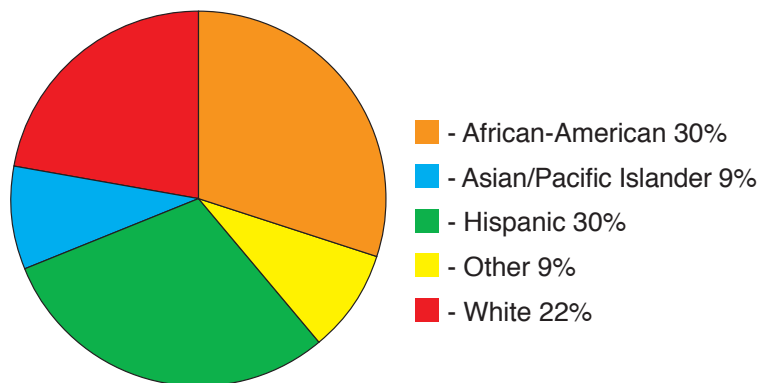
### CASE TYPES



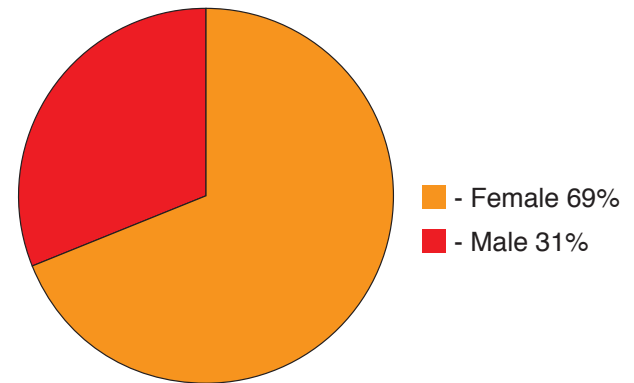
### AGE



### RACE



### GENDER





# FINANCIAL STATEMENTS

## INCOME

	2013	2012
Massachusetts Legal Assistance Corporation	4,032,362	3,873,060
Law Firms and Attorneys	3,422,145	3,622,787
<i>Cy Pres</i> Awards	92,327	104,016
Foundations/Corporations	1,313,393	1,397,896
Government Grants	1,820,660	1,486,991
Individual Contributions	1,358,922	1,463,585
United Way of Massachusetts Bay and Merrimack Valley	459,479	477,034
Miscellaneous	1,541,545	793,223
<b>TOTAL INCOME BEFORE DONATED SERVICES</b>	<b>14,040,833</b>	<b>13,243,592</b>
Volunteer Services	7,240,878	5,779,456
<b>TOTAL INCOME</b>	<b>21,281,711</b>	<b>19,023,048</b>

## EXPENSES

	2013	2012
Salary and Benefits Subtotal	11,498,889	10,943,275
Non-Personnel:		
Occupancy	503,312	418,984
Equipment and Supplies	396,241	512,981
Contract Services	328,141	361,881
Library and Litigation Expenses	272,369	292,313
Transfer to Capital	45,000	45,000
Miscellaneous	600,952	544,993
Non-Personnel Subtotal	2,146,015	2,176,152
<b>TOTAL EXPENSES BEFORE DONATED SERVICES</b>	<b>13,644,904</b>	<b>13,119,427</b>
Volunteer Services	7,240,878	5,779,456
<b>TOTAL EXPENSES</b>	<b>20,885,782</b>	<b>18,898,883</b>
<b>CUMULATIVE OPERATING NET ASSETS</b>	<b>5,417,771</b>	<b>5,021,842</b>

# THANK YOU! LEGAL COMMUNITY DONORS

The legal community demonstrates a special commitment to GBLS and its mission of ensuring access to justice regardless of income. Every year individual attorneys, law firms, and corporate law departments show the extent to which they respect and value the legal assistance GBLS provides to impoverished residents of greater Boston. Their support is provided in a variety of ways.

## LAWYERS FUND DRIVE

### **Leadership League**

*(\$800 or more per Boston attorney)*

Choate, Hall & Stewart  
Collora, LLP  
Goodwin Procter  
Goulston & Storrs  
Hemenway & Barnes  
Ropes & Gray  
Skadden  
Sugarman and Sugarman, P.C.  
WilmerHale

### **Pacesetter League**

*(\$650-\$799 per Boston attorney)*

Bingham McCutchen LLP  
Davids & Cohen, P.C.  
Englander, Leggett, & Chicoine, P.C.  
Meehan, Boyle, Black & Bogdanow, P.C.  
Nixon Peabody LLP  
Sullivan & Worcester LLP  
Sunstein Kann Murphy & Timbers LLP

### **Reginald Heber Smith League**

*(\$500-\$649 per Boston attorney)*

Allen & Hollander, LLP  
Brown Rudnick Berlack Israels, LLP  
Dechert LLP  
Foley Hoag LLP  
Gargiulo Rudnick  
Kimball Brousseau

### **President's League**

*(\$350-\$499 per Boston attorney)*

Davis, Malm & D'Agostine, P.C.  
Edwards Wildman Palmer  
Fish & Richardson, P.C.  
Klein Hornig LLP  
Nutter, McClennen & Fish, LLP  
Robinson & Cole LLP

### **Supporter League**

*(\$200-\$349 per Boston attorney)*

DLA Piper LLP (US)  
Krokidas & Bluestein LLP  
Landay, Leblang & Stern  
Messing, Rudavsky & Weliky  
Mintz Levin  
Morse, Barnes-Brown & Pendleton  
Murtha Cullina, LLP  
Sugarman, Rogers, Barshak & Cohen, P.C.

### **Friends League**

*(up to \$199 per Boston attorney)*

Adler, Cohen, Harvey, Wakeman & Guekguezian LLP  
Bernkopf Goodman LLP  
Boyle, Shaughnessy & Campo, P.C.  
Burns & Levinson LLP  
Casner & Edwards, LLP  
Cesari & McKenna

Cetrulo LLP

Conn, Kavanaugh, Rosenthal,  
Peisch & Ford, LLP

Cooley LLP

Cooley Manion Jones LLP

Day Pitney LLP

Faber Daeufer Itrato & Cabot PC

Finnegan

Healy, Fiske, Richmond & Matthews

Holland & Knight LLP

Janet E. Bostwick, P.C.

K&L Gates LLP

Kotin, Crabtree & Strong, LLP

Lathrop & Gage LLP

Lawson & Weitzen

Lee Rivers & Corr

Morrison Mahoney LLP

O'Malley and Harvey

Peabody & Arnold LLP

Pierce, Davis & Perritano

Proskauer Rose LLP

Rackemann, Sawyer & Brewster

Ruberto, Israel & Weiner

Sally & Fitch

Segal, Roitman

Seyfarth Shaw

Shaevel & Krems, LLP

Sheehan, Phinney, Bass & Green PA

Smith Lee Nebenzahl LLP

Verrill Dana LLP

Wolf Greenfield

## CORPORATE LEGAL DEPARTMENTS

Analog Devices  
Arbella Insurance Group Charitable Foundation  
Bain & Company, Inc.  
Biogen Idec  
Boston Scientific Corporation  
Citizens Bank  
Copyright Clearance Center, Inc.  
Eastern Bank  
Eaton Vance Management  
EMD Serono, Inc.

Fidelity Investments  
InterSystems  
LPL Financial  
MFS Investment Management  
Millipore  
Pioneer Investment Management USA Inc.  
Putnam Investments  
Reit Management  
Santander Bank  
State Street Foundation, Inc.

## LAW FIRM FELLOWSHIPS

In addition to their 2013 Lawyers Fund Drive contribution, the following firms provided funding to support the salaries of GBLS attorneys.

Goodwin Procter  
Ropes & Gray

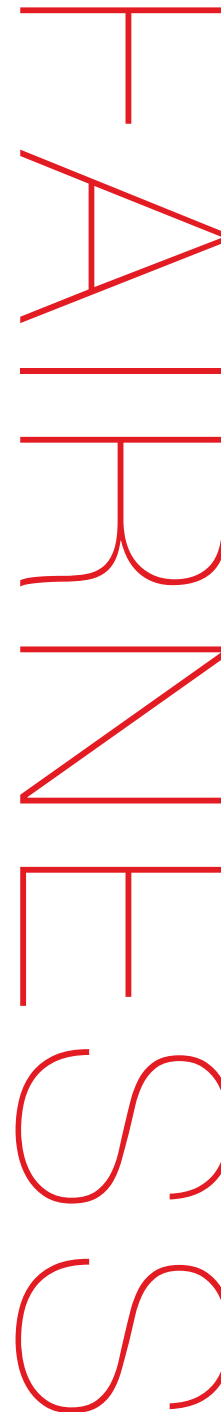
Skadden  
WilmerHale

## DEFERRED/LOANED ASSOCIATE FELLOWSHIPS

In addition to their 2013 Lawyers Fund Drive contribution, the following firms provided law firm associates to work full time at GBLS.

Bingham McCutchen

Ropes & Gray



## MATCHING GIFTS – ASSOCIATES' DRIVE

Donations were matched by the firms or by individual partners.

Anderson Krieger LLP  
Burns & Levinson LLP  
Choate, Hall & Stewart  
Cooley LLP  
Davis, Malm & D'Agostine, P.C.  
DLA Piper  
Donnelly, Conroy & Gelhaar  
Edwards Wildman Palmer  
Finnegan  
Fish & Richardson  
Foley Hoag LLP  
Hemenway & Barnes  
Holland & Knight  
K&L Gates LLP

Krokidas & Bluestein LLP  
Lando & Anastasi  
McCarter & English  
Nutter, McClennen & Fish, LLP  
Peabody & Arnold LLP  
Prince Lobel Tye LLP  
Sherin and Lodgen LLP  
Skadden  
Sugarman, Rogers, Barshak & Cohen, P.C.  
Sullivan & Worcester LLP  
Sunstein Kann Murphy & Timbers LLP  
WilmerHale  
Wolf Greenfield



Photo credit: John Kennard

Pictured above are the 2013 GBLS Associates Drive captains from law firms across the Boston area who won awards and helped to raise over \$330,000 to represent survivors of domestic violence.

*“It was a pleasure to work with GBLS these years and help grow the donations from Goulston.*

*You and your colleagues at GBLS do truly wonderful and life-saving and altering work.”*

*— Christian Regnier, Goulston & Storrs Associate and recently-retired Associates Drive captain*

## 2013 CY PRES\* AND OTHER SIMILAR AWARDS

We wish to acknowledge and thank the following law firms who facilitated the award of class action lawsuit residuals to GBLS.

Scott Adams, Attorney at Law  
Berman DeValerio  
Lichten & Liss-Riordan, P.C.  
Seyfarth Shaw  
Shapiro Haber & Urmy LLP

*\* Cy Pres awards are residual funds arising from damages awarded in successful class action cases, that are unclaimed or cannot be distributed to all the class members or beneficiaries who were the intended recipients.*

## IN-HOUSE ATTORNEY DRIVE

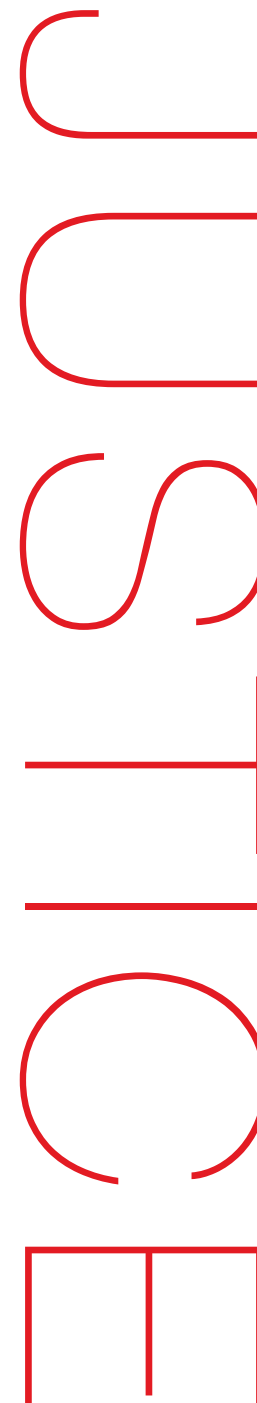


Photo credit: Anna Marie Ventura

The In-House Attorney Drive for GBLs, now in its 4th year, is thriving. The amount raised has doubled with 126 counsel and compliance attorneys as well as other staff at 19 companies contributing to the effort so far. (The drive was not yet finished at the time of printing.)

We are especially grateful to the steering committee and team leaders who make this drive happen, some of whom are pictured here. (Members of the steering committee are indicated in bold.) From left to right: Edward Thomas (Re:Sources USA, a Publicis Groupe Company), **Sarah Gill** (LPL Financial), Kathy Henry (Plymouth Rock Assurance), Michael Cappucci (Harvard Management Co.), **Martha Mazzone** (Fidelity Investments), **Anne Trinque** (GMO), **John Hitt** (Fidelity Investments), Rebecca Radford (Loomis Sayles), and **John Norberg** (Wellington Management).

Not pictured are: Diane Fernandes (Bain & Co.), Gregory Pickard (Brown Brothers Harriman), Leigh-Ann Durant (EMD Serono), Jay Powers (Citizens Bank), Sean Geary (Global Partners), John Perullo (Haemonetics), Paul Gallagher (John Hancock), Jennifer Carpenter and Peggy Ho (LPL Financial), Christopher Bohane (MFS), Scott Friedman (Old Mutual), and Linda Podheiser (Pioneer Investments).



# ANNUAL FUND DONORS

We would like to extend a special thank you to the individuals highlighted in **red** for not only their donations, but for their fundraising leadership in the Associates Drive, Corporate Counsel Drive, and Emerging Leaders Campaign.

## **\$50,000 and above**

David & Cynthia Phelan  
Daniel E. Rothenberg  
Anonymous (2)

## **\$25,000 - \$49,999**

Scott Adams  
Stephanie L. Brown  
Foundation  
John F. Cogan, Jr.  
Marc & Michelle Gary  
Bill & Leslie Lee  
John T. Montgomery  
Regina M. Pisa  
Tara Stilwell  
Anonymous

## **\$10,000 - \$24,999**

Katharine Bachman &  
Kathleen Thurmond  
Randall W. Bodner  
Cogan Family Foundation  
Stephen M.L. Cohen  
Martin & Margorie B. Cohn  
Thomas J. &  
Midge DeSimone  
J. Anthony Downs & Kay Kim  
Mike Elefante  
John Kenneth Felter  
Steven S. Fischman  
Robert S. Frank, Jr.  
William P. Gelnow  
Deirdre M. Giblyn &  
David B. DuBard  
Robert A. Glassman  
Louis A. &  
Phebe S. Goodman  
Robert J. Hildreth

Alex H. MacDonald &  
Maureen Strafford  
Richard A. Marks &  
Jennifer Morrison  
Phyllis McGillicuddy  
Charitable Trust  
Joseph E. Mullaney  
John Nadas  
New Directions Foundation  
Kenneth Parsigian &  
Shay Mayer  
Brian & Erin Pastuszewski  
Lia & William Poorvu  
Robert Sanoff  
Michael & Jennifer Sexton  
Edwin E. Smith  
W. Thomas & Joan C. Smith  
Melissa & Gary Tearney  
Marian A. Tse  
Edward J. Weiss  
Steven & Nancy Wilcox  
Anonymous (3)

## **\$5,000 - \$9,999**

Timothy C. Blank  
Bernard & Bonnie Bonn  
Stephen J. Brake  
John J. Carroll  
Cynthia M. Clarke  
Sarah & William Connolly  
Jonathan & Margot Davis  
James S. Dittmar  
Alice & Ken Erickson  
Timothy French  
Elizabeth Shea Fries  
Michael & Linda Frieze  
Rhys Gardiner  
Lena G. & Ronald P. Goldberg

Geoff & Debbie Howell  
Patrick T. Jones  
Fred & Alicia Kelly  
Richelle & Mark Kennedy  
David A. Kluff  
William A. Knowlton  
Daryl Lapp & Cathryn Kato  
**Robert Leveille &**  
Mona Leveille  
Joan McPhee  
Samuel B. Moskowitz  
Robert J. Nagle  
John J. Regan  
David W. &  
Deirdre Rosenberg  
David P. Rosenblatt  
Larry & Nancy Rowe  
Jeffrey Rudin  
Laura E. Schneider  
Robert A. Skinner &  
Jody Collins Skinner  
Eve M. Slattery  
Jennifer C. Snyder  
Jim & Stephanie Sokolove  
May & Tetsuo Takayanagi  
Jerry and Laura Tichner  
Albert P. & Judith Zabin  
The Anne and Henry Zarrow  
Foundation  
B. Andrew Zelermyer &  
Daniel Romanow  
Anonymous (1)

## **\$2,000 - \$4,999**

Peter Alpert & Jill Schwab  
William B. Asher, Jr.  
John & Lisa Batter  
Michael D. Beauvais

Matthew A. Berlin &  
Simone Liebman  
Margaret A. Brown  
Gregory E. Bulger Foundation  
James C. Burling  
A. William & Carol Caporizzo  
David Chang  
David C. Chapin  
Judy & Jonathan Chiel  
**Zachary Coseglia**  
Robert D. & Wendy J. Cultice  
Lia S. DerMarderosian  
Anna E. Dodson  
**Leigh-Ann P. Durant**  
Martin M. Fantozzi  
Stephen D. Fisher  
Mark C. Fleming  
Scott L. Glanzman  
Daniel W. Halston  
Philip &  
Mary Causey Hamilton  
Ellen M. Harrington  
Susan A. Hartnett  
Larry & Suzanne Heffernan  
Kurt W. Hemr &  
Charlotte Hemr  
Ramon & Joanna Herrera  
Michael & Lisa Heyison  
**John J. Hitt**  
Jesse J. Jenner  
Robert G. Jones  
Adam P. Kahn  
Jeffrey Katz  
Nancy Keating  
Robert D. Keefe  
Joseph B. Kittredge, Jr.  
Joseph L. Kociubes  
William R. & Amy D. Kolb



Gordon Lawrence  
Francis C. Lynch &  
Ms. Sally Mapp Walker  
**Martha Mazzone**  
Leslie A. McDonell  
Andrew J. McElaney  
James W. McGarry  
Howard D. Medwed  
Suzanne Murray  
Edward J. Naughton  
**John Norberg** &  
Margaret Norberg  
Stephen H. Oleskey  
William R. O'Reilly, Jr. &  
Elizabeth C. Ross  
Anne L. Peretz  
The Pinkerton Foundation  
Lisa Pirozzolo &  
Christopher Goddu  
Vincent J. Pisegna  
Michael N. Rader  
Alison F. Reif  
Catherine E. Reuben  
Elizabeth Reza  
Andrea Robinson  
Graham Robinson  
Sarah A. Rothermel  
Julia Schlozman  
Ellen Semonoff &  
Daniel J. Meltzer  
Gregory D. Sheehan  
Karen Siegel  
John D. Sigel & Sally Reid  
Paul Solman &  
Janet Freeman  
Richard W. &  
Joann Southgate  
Franklin G. Stearns  
Elizabeth Steele  
Donald R. Steinberg  
Jeffrey M. Stoler

Elliot M. Surkin  
**Anne Trinke** & Brian Trinke  
Andrew M. Troop  
William B. Tyler  
Donald E. Vaughan &  
Lee S. Ridgeway  
Cynthia Vreeland &  
David Jones  
John & Jane Ward  
Jonathan M. Zorn  
Anonymous (4)

#### **\$1,000 - \$1,999**

AFT-MA  
Michael A. Albert  
Susan H. Alexander  
Adrienne M. Baker  
Ira S. Bieler  
John E. Bowman  
W. Lincoln Boyden  
John & Suzanne Bruno  
Krista Busnach  
Michael & Berry Cappucci  
**Jennifer L. Carpenter Boylan**  
Bill & Mary Ellen Coffey  
Greg Corbett  
Ronald M. & Nancy M. Davids  
Jonathan & Kim Davis  
Juliet A. Davison  
Lee & Nancy J. Dunham  
Elaine M. Epstein  
Joseph R. Fleming  
Berry & **Michael Cappuci**  
Elizabeth L. Foster-Nolan  
Martha & Timothy Frahm  
Edward R. Gates  
Kristin A. Gerber  
Sarah Gill  
Gary Gill-Austern  
Christine Gilman &  
Thomas Andrews

Michael T. Gilmore &  
Deborah M. Valenze  
Richard Giunta  
Amy J. Gould  
Gary & Nancy Greenberg  
The Irene Greif and Albert  
Meyer Family Fund  
Lena Gurley  
William E. Haynsworth  
**Kathleen Henry** & Jim Henry  
Kay Hideko Hodge  
Christian M. Hoffman  
Jason Honeyman  
Elizabeth A. Houlding  
Patricia R. Hurley &  
Michael Weindling  
Mark Jensen & Lisa Martin  
Julie & Mark Jones  
Vasiliki Kalaitzidis  
John & Tappy Kimpel  
William B. King  
Scott & Jennifer Kirwin  
Peter Kochansky &  
Lauren Dias  
Martha J. Koster  
Krakow & Souris, LLC  
Anna Kuznetsova-Schafer  
Donald G. Leka  
**Elizabeth Lintz** & John Kramer  
**Chelsea A. Loughran**  
Kenneth W. Luke  
Michael & Amy MacDougall  
Eric & Susan Marandett  
Ronald G. Marlow  
Massachusetts AFL-CIO  
Massachusetts  
UAW-CAP Council  
Robert W. and Gladys S.  
Meserve Charitable Trust  
Tara C. McCarthy &  
Peter D. Stahl

Neil & Amy McGaraghan  
John B. McGinty, Jr.  
Susan C. McSwain  
Phyllis Fine Menken  
Jeanne Meserve  
John E. Meserve  
Richard A. Meserve  
William G. Meserve  
Martha L. Minow &  
Joseph Singer  
Jessica Mols  
Joseph J. Mueller  
Matt & Amy Mugherini  
Kathryn Murtagh  
Timothy Oyer  
Nicole & Steven Park  
Diane B. Patrick  
Mark Pearlstein  
Susan Pereira  
Lon & Ilissa Povich  
Frederick & Ruthann Prifty  
Thomas & Donna Provost  
The Rothstein Foundation  
**Anthony E. Rufo**  
Mary K. Ryan  
Gared S. Schneberger  
Thomas G. Shapiro  
Adam L. Sisitsky  
Emily A. Spieler  
Norman Stein & Mindy Lubber  
H. Michael Stevens  
Michael Summersgill  
Arthur & Abigail O. Telegen  
Valerie E. Tipping  
Maria Trevisan  
Laurence H. Tribe  
Michael H. Turk  
Michael J. Tuteur  
John Van Amsterdam  
W/S Development  
Associates LLC

Robert Walat  
Patrick Waller  
Scott Webster  
Roberta M. Weil  
Daryl Wiesen &  
Kathleen Lenihan  
Amy Woods  
Stephen S. Young  
Anonymous (5)

#### **\$500 - \$999**

Anita S. Agajanian  
Michael L. Altman  
Eric Amundsen  
**Jennifer L. Antoniazzi**  
Christian A. Atwood &  
Susan A. O'Bell  
Thomas & Sharon Ayres  
Alexander Bagnall  
Charles H. Baker  
Anne Bandes  
Bruce S. Barnett  
Steven & Martha Barrett  
David A. Barry  
Kevin Batt  
Melissa Beede  
Stacey A. Best  
Brandon L. Bigelow  
Dinah K. Bodkin  
Jean Bowe  
William P. Brady, Jr.  
Abra Bron  
**Ashley H. Brooks**  
Tom Brown  
Mark H. Burak  
Sarah Burg  
James Burns  
Brian P. Carey  
Ira Carp  
Larry & Christine Carsman  
Ann M. Chiacchieri

## ANNUAL FUND DONORS (cont'd)

### \$500 - \$999 (cont'd)

Susan E. Chimene &  
Robert M. Weiss  
Jeff Coburn  
H. Theodore & Cynthia Cohen  
Kimberly Collins  
Mary Connaughton  
Bryan C. Connolly  
Coolidge Coolant Co., Inc.  
Laura A. Coyne  
Elizabeth Curran  
Jennifer M. Perrigo &  
Kevin B. Currid  
Joanne D'Alcomo  
Joshua M. Daniels  
Jay DeYoung  
Patrick P. Dinardo  
Anthony M. Doniger  
Jason & Adrien Duncan  
Alan S. Emmet  
Neil Ferraro  
Daniel & Jo Forman  
Dianne L. Frade  
Daniel Gallagher & Mimi Fong  
Andrew & Julie Gallo  
Lisa C. Goodheart  
Alexandra M. Gorman  
Pat Granahan  
Daniel L. Greenberg  
David P. Halstead  
Colleen & James Hankins  
Donna Hanlon  
Evelyn Haralampu  
Joshua & Helen Hartshorne  
Carol Head  
**Omar Hemady**  
Denise Hilger  
**Peggy Ho** & Leonard Ho  
Dianne Hobbs  
Megan Jeans  
Marc Johannes

Matthew N. Kane  
Janice & Leonard Kaplan  
Daniel & Priscilla Karnovsky  
Leena Karttunen Contarino  
David E. Katz  
Steven R. Katz  
Hunter Keeton  
Adam J. Kessel  
Sarah Kim  
Lawrence Kolodney  
Donald J. Kondub  
Jason Kropp  
Cori & Stephen Lable  
William H. Brack &  
Jessica A. Ladd  
Thomas A. Lehrer  
Winifred I. Li  
David Linhart  
Frank Liu  
Michael Manthei  
Jarrod Matteson  
**Thanos Matthai**  
Brent M. McDonald  
Laura McIntyre  
Peter McIsaac  
Jeff Meaney  
Scott Memmott  
**Jennifer Mendonca**  
Silvio & Daniela Micali  
Jeffrey W. Mittleman  
**Julia Monack**  
Seth Moskowitz  
Cheryl Muise  
Allison Myers  
Karen E. Nelson &  
Daniel L. Greenberg  
Christine M. Netski  
Michelle Nyein  
Christine O'Connor  
Thomas L. P. O'Donnell  
Anne Palmer

Nicole L. M. Parsons  
C. Whitney Pedersen  
Steven P. Perlmutter  
**Rory P. Pheiffer**  
Shirin Philipp &  
John M. Higgins  
Pioneer Valley AFL-CIO  
Stephanie M. Poggi  
Mark Polebaum  
Michael Pomianek  
**Meyer Potashman**  
Gregory L. Pottle  
Christopher J. Powell  
Kathleen Provost  
Stephen Puopolo  
**Christian Regnier**  
**Meg Rehrauer**  
**Lauren Reznick**  
Paul Rigby  
Rebecca Rogers  
James I. Rubens  
Roberta L. Rubin  
Allen Rugg  
Samuel Sherry  
Lori J. Shyavitz  
Devin Smith  
Edwin Smith  
Robert H. & Elizabeth Smith  
Sonia Steele  
Charlene A. Stern-Dombal  
Neil Sullivan  
Robert & Barbara Sydney  
Agnes L. Sym  
**Victoria Thavaseelan**  
Paul Tremblay & Linda Beattie  
Michael Unger  
Edmund J. Walsh  
Deborah Jackson Weiss  
Michael R. Weissmann  
Neil Wermuth  
Christine Wichers

Monika A. Wirtz  
Wolfman Charitable  
Foundation  
Douglas Wolfson  
Emily K. Yu  
Lydia Yu & Tim Hoitink  
Anonymous (21)

### \$250 - \$499

Ned & Maureen Abelson  
Bob Abrahamsen  
**Alexander Adam**  
Anthony V. Agudelo  
**Ani Ajemian**  
Sunny Allen & Chris Jones  
Julia Amrhein  
Jonathan & Erin Anderman  
Michael S. Appel  
**Monique Austin**  
Brian Awe  
Charles A. Baker, III  
Richard G. Baldwin  
**Jessica Ball**  
Victor N. Baltera  
Jared Barnes  
Stacy H. Barrow  
Edward J. Barshak  
Brian Bean  
M. Frank Bednarz  
Mark & Lisa Belanger  
Cory C. Bell  
Deborah L. Benson  
Nicholas Bentley  
Chris Bergen  
Brian P. Bialas  
Megan E. Bisk  
Janeen Blake  
Gitte Blanchet  
**David E. Blau**  
Michelle Blauner &  
Adam Ruttenberg

Edward Bloom  
 Harvey Bock  
 William L. Boesch  
**Christopher R. Bohane**  
 Anthony L. Bolzan  
 Andrew & Jennifer Borggaard  
 Ronald S. Borod  
 Anita M. Bowles  
 Bowman Selig Family  
 Charitable Trust  
 Jacquelynne Bowman &  
 David Rentsch  
 Gregory Bradford  
 Julia Bramley  
 Tracey Brenner  
 Heidi E. Brieger  
 Brendan J. Brodeur &  
 Sophia Kogan  
 Elizabeth Brookhiser  
 Justin A. Brown  
 Sandra Brown  
 Stephen Brown  
 Dina Brownstein &  
 Joseph Kriesberg  
 Jennifer Broxmeyer  
 Ellen A. Bruce  
 Marley Brumme  
 Marc Bryant  
 Kevin Budris  
 Megan Bunting  
 Kenneth E. Burdon  
 Katie O'Neill Burgener  
 Robert Burns  
 Romeo G. Camba  
 Lauren Campbell  
 Wei Campbell  
 Patricia Cantor  
 J.W. Carney, Jr.  
 Robert M. Carney  
 Stephen W. Carr  
 Arwyn Carroll

Erica M. Carroll  
 James R. Carroll &  
 M. Claire Masinton  
 Carolynn A. Cartelli  
 Timothy John Carter  
 Courtney Caruso  
 Edmund & Wendy Case  
 Cameron & Michael Casey  
 Ben Chapman  
 Jeanne Charn Bellow  
 Benjamin Chaset  
 Tani Chen  
 Elizabeth Chernus  
 George L. Chimento  
 Francis E. Chin, Chin &  
 Curtis, LLP  
 Mark Cianci  
 Christopher Clark  
 Sherrill P. Cline  
 Clifford R. Cohen  
 Stephany G. Collamore  
 Jennifer Collins  
 Edward M. Condit  
 John P. Condon  
 Sandra Szela Congdon  
**Patrick Connolly**  
 Kevin Conroy  
**Brendan Cox**  
 Robert K. Crabtree  
 Kyle Crossley  
 Elizabeth & Christopher Cullen  
 Deirdre A. Cunnane  
 Paula G. Curry  
 William Dalsen  
 Kevin P. Daly  
 Roslyn Daum &  
 Andrew Nichols  
 Elizabeth S. Davenney  
 Elliott Davis  
 Howard W. Davis  
**Melissa H. Davis**

Kathryn G. Day  
 Andrew Dean  
 Kevin DeJong  
 Catherine Deneke  
 Yuanshu Deng  
 Emily Dertz  
 Christine Desan-Husson &  
 Robert Husson  
 Smita M. Deshmukh  
 Elizabeth N. Dewar  
 Stacylyn Dewey  
 Mary DiMaiti  
 James DiTullio  
 Derek Domian  
 John & Kate Donovan  
 Michael Doore  
 J. Patrick Dowdall  
 Hilary B. Dudley  
 Anderson J. Duff  
 Jennifer Duke  
 Christopher Dunham  
 William Dunn  
 Anthony Dutra  
 Kenneth Earley  
 Pamela W. Egleston  
 Roque El-Hayek  
 Adrienne M. Eelman  
**Rachel L. Emsley**  
 David & Edie Engel  
 Marc Evans  
 Bruce E. Falby  
 Timothy Famulare  
 Jesse A. Fecker  
 Paul L. Feldman  
 Steven L. Feldman &  
 Hedda Rublin  
 Nora E. Field  
 Susan Marie Finegan  
 Jonathan R. Fishburn  
 Kevin Fitzpatrick  
**Michael Fitzpatrick**

Michael P. Flammia  
 B. Aidan Flanagan  
 Michael Flannery  
 Christine N. Fletcher  
 Melissa Foley  
 William B. Forbush, III  
 Jody Forchheimer  
 Vicki Fortino  
 Amy L. Fracassini  
 Thomas Franklin  
 Leigh R. Fraser  
 Peter Friedenber  
 Kwadwo Frimpong  
 Akiyo Fujii  
**Kelly A. Gabos**  
 S. Zeld & Elkan Gamzu  
 Nadia K. Gareeb  
 Martin Gartland  
 Alan S. Geismer  
 Ian Gemmell  
 Frank L. Gerratana  
 Christopher Gerry  
 Gregory Gerstenzang  
 Sukanya Ghosh  
 Krishna Gilbert  
 Michael Gilbert  
 Jeff Goldman  
**Angela Gomes**  
**Mark Goracke**  
 Colleen Granahan &  
 Dan Field  
 Greater Boston Labor  
 Council AFL-CIO  
 Courtney Gribbon  
 Jill Grossberg  
 Lara D. Guercio  
 Sara Gutierrez-Dunn  
 Jesse D. Hallee  
 Sylvia & Roy A. Hammer  
 Jonathan I. Handler  
 James Hanifin

Michael W. Hardgrove  
**Alison R. Harrall**  
 Scott Harshbarger &  
 Judith Burke Stephenson  
 Brent Hayes-Hand  
 Matthew Heffernan  
 Catherine & John Henn  
 Chris Henry  
 Douglas M. Henry  
 Patrick Hernon  
 Sean Hill  
 Matt Holian  
 Brad & Jane Honoroff  
 Christopher E. Houston  
**Sheryl A. Howard**  
**Tiffany M. Howard**  
 Gerald B. Hryczyn  
**Diana Huang**  
 Eric J. Huang  
 Joseph A. Hugg  
 David P. Hutchinson  
 Lauren Ingegneri  
 Victoria Ippolito  
 Jennifer Itzkoff  
 Matthew Iverson  
 Hilary Jaffe  
**Clara N. Jimenez**  
 Karen Johnson &  
 Jim Broderick  
 Oona Johnstone  
 Winston K. Jones  
 Brian Judge  
 James C. Kaddaras, Jr.  
 Susan Kaim  
 Kevin Kam  
 Joanna Kao  
 Laura M. Kaplan  
 Leah S. Kaplan  
 Mitchell H. Kaplan  
 Tamsin Kaplan  
 Kristen A. Kearney

## ANNUAL FUND DONORS (cont'd)

### \$250 - \$499 (cont'd)

Elizabeth H. Kelly  
Austin Kim  
**Alison M. Kinchla**  
Christopher King  
Patrick King &  
Sandra L. Moody  
**Kendra Kinscherf**  
Seth Kipp  
Karl E. Klare  
**Nadea Kolege**  
Erin Kravitz  
Arielle Kristan  
**Adam T. Kurth**  
Mary Kuusisto  
Robert M. Langer  
Claire Laporte  
Elizabeth Larcano  
Kelly Largey  
Brian Lee  
Matthew Lee  
Regina F. Lee  
Vivian E. Lee  
Mary K. Leonard  
**Daniel Lev**  
Andrew R. Levin  
David Lewis  
Steven D. Lickstein  
Christina Licursi  
Natalie Linendoll  
Esty Lobovits  
Ian Lodovice  
Werner & Carol Lohe  
Amy Lonergan  
John T. Lynch  
David S. Mackey  
George P. Mair  
Mina Makarious  
C. Michael Malm  
John P. Martin  
Jane Materazzo

**Julia Mathis**  
Joshua Matloff  
John Matosky  
Gary S. Matsko  
Scott & Susan Mazur  
John A. McBrine  
Daniel McCaughey  
Ann McCauley  
Kelly M. McClure  
Kellie McEvoy  
Thomas J. McGinnis  
Kathleen McGrath  
Colleen McKiernan  
Neil V. McKittrick  
Matthew V. McTygue  
Kevin & Danielle Meagher  
Pamela & Stephen Meister  
Rebecca Ritvo Melaas  
Maureen Meredith  
Gayle M. Merling  
**Katy O. Meszaros**  
James W. Meyer  
Mary Lee Moore  
Patricia Moran  
Elizabeth P. Morano  
James Morris  
Beth Muir  
Samuel Mullin  
Brendan Murphy  
Alisha Q. Nanda  
Benjamin Nardone  
John Nay  
Cara J. Nelson  
Matt Nevins  
**Claire Newton**  
Catherine Ng  
Carolyn Nguyen  
Harvey Nosowitz  
Andrew T. O'Connor  
Robert J. O'Connor  
Old Cambridge

Baptist Church  
John G. O'Neill  
Mary Orosz  
Nicole A. Palmer  
Young Park  
Ellen Causey Peckham  
Lorraine Pereira  
John & Lydia Perkins  
Kathleen Phelps &  
Bob O'Connor  
Gregory L. Pickard  
Joel F. Pierce  
Richard Piper & Ann Coles  
Timothy M. Pomarole  
Scott D. Pomfret  
Lauren Pond  
Kelli J. Powell  
John J. Powers  
Jane Price Schwartz &  
David Schwartz  
Christopher W. Price  
James R. Pugh  
Scarlett Rajbanshi  
Gershon M. Ratner  
Srikanth Reddy  
Katherine Reynolds  
Erica Rice  
Peter S. Rice  
Jennifer Rikoski  
Matthew P. Ritchie  
Elizabeth A. Ritvo  
Anne Robbins  
William Roberts  
Linda Rockett  
Allan G. Rodgers  
Madeleine Rodriguez  
Regina E. Roman  
Rachel Rosen  
Daniel E. Rosenfeld  
Anne Ross  
Emma Rothfeld

**Daniel Routh**  
James V. Rowan  
Andrew Royce  
David A. Rozenson &  
Jessica Solodar Rozenson  
Laurie F. Rubin  
Richard D. Rudman  
Ronald & Mary Ruth  
Andres E. Saldana  
Meaghan Lane Sanders  
Saul A. Schapiro &  
Bella Rosner  
Stacey N. Schmidt  
Amy Schnitzer  
Scott J. Schoen  
Sheldon & Ellen Schwartz  
Edward K. Sebelius  
Marshall Senterfitt  
David L. & Jane B. Shapiro  
Tracy Shaughnessy  
Carol Shea  
Laura S. Sherman  
Robert P. Sherman  
**Gregory Shiferman**  
Larry & Irina Shumway  
Eric Skeffington  
Jake Slesnick  
Elizabeth Howard Small  
Jonathan Small  
**Thomas Smith**  
Jessica Soto  
Robert W. Sparkes, III  
Margaret Spellman  
Moshe Spinowitz  
**Heather Sprague**  
Lawrence T. Stanley, Jr.  
**Ilenna Stein**  
Matthew Stein  
Henry & Pamela Steiner  
Joshua Stern  
Sharona Sternberg

Steve & Joan Subrin  
 Keerthi Sugumaran  
 Marjorie Suisman  
 Gail A. Sullivan  
 Jennifer Sullivan  
 Johanna Wise Sullivan  
 James A. Swartz  
 Jeffrey Swope  
 Tim Syrett  
 Kuangshin Tai  
 Mark L. Tang  
 Alan Tannenwald  
 Daniel A. Taylor  
 William Taylor  
 Peter S. Terris  
 James E. Thomas  
 Amy Tindell  
 Matthew S. Tisdale  
 Keith Toms  
 Connie Toomey  
 Andrew Totman  
 Bruce I. Tribush  
 Astrid Tsang & Will Toubman  
 UFCW 328  
 United Food and Commercial  
 Workers Union  
 Alana Van der Mude  
 Johanna van Giffen  
 Bonnie Vanzler  
 Mark Vaughn  
 Josef B. Volman  
 Jamie L. Wacks  
 Carol J. Wagner  
 Erin Walczewski  
 Hannah Waldron  
 Jack Ward & Joe Miglorie  
 Katy Ward  
 Alvin C. Warren  
 Megan Watts  
 McKenzie Webster  
 Douglas & Judith Weinstock

Michael D. Weisman  
 Richard & Sally Weitzen  
 Paul E. White  
 Bruce D. Wickersham  
 John T. Williams  
 Steven Willis & Elissa Freud  
 Neal & Clea Winneg  
 Stephen & Lynette  
 Yorgey Winslow  
 Tom & Sue Wintner  
 Chi Chi Wu & Andrew Leong  
 Kristen A. Young  
 Robert G. Young  
 Jeanne Yozell  
 Phil Zachos  
 Wendy B. Zazik  
 Veronica Zhang  
 Ari Zivyon  
 Shannon Steele Zollo  
 Anonymous (48)

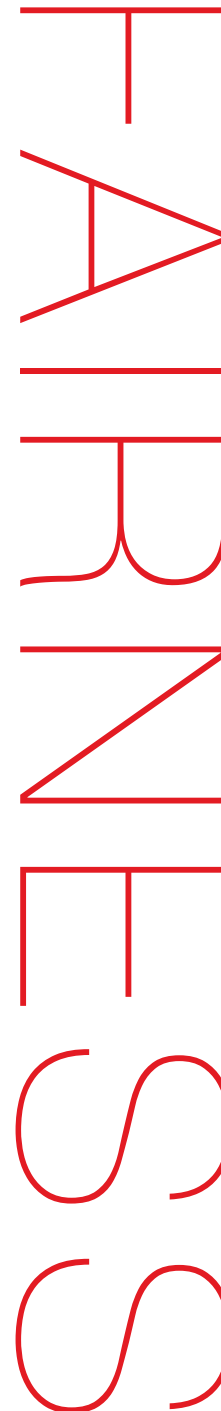
#### ADDITIONAL DONORS

We are also grateful to the more than 1,300 people who gave up to \$249.

## MATCHING GIFTS OF ANNUAL FUND DONORS

AIG Matching Grants Program  
 Arbella Insurance Group Charitable Foundation  
 Bank of America  
 Covidien  
 Eastern Bank Charitable Foundation  
 EMD Serono, Inc.  
 FactSet Research Systems  
 Houghton Mifflin  
 Liberty Mutual Foundation  
 LPL Financial  
 MFS Investment Management  
 Natixis Global Asset Management, LLP  
 Pioneer Investment Management  
 Plymouth Rock Foundation  
 Saint-Gobain Corporation  
 State Street Matching Gift Program  
 Trillium Asset Management, LLC  
 Verizon Foundation  
 Anonymous (2)

Ensure fairness for all in the justice system.  
 Go to [www.gbls.org](http://www.gbls.org) and click on “Donate Now!”



# THE MARSHALL PLAN



Chief Justice  
Margaret H. Marshall

The Marshall Plan for GBLS was launched in the name of Chief Justice Margaret H. Marshall, former Chief Justice of the Massachusetts Supreme Judicial Court, to help ensure that as many poor people as possible have access to the legal assistance they require in this time of great need. Donors to the Marshall Plan pledged over \$2.5 million dollars, enough to preserve 11 advocacy positions for 3 years and provide legal services that will benefit more than 9,000 people who would otherwise not be served during that time.

## LEGAL LEADERS (\$75,000 or more)

Stephanie L. Brown Foundation  
John F. Cogan Jr.  
John F. Donohue  
Marc & Michelle Gary

Thomas G. Gunning  
Bill & Leslie Lee  
John T. Montgomery  
John A. Nadas

David & Cynthia Phelan  
Regina M. Pisa  
Melissa & Gary Tearney  
Anonymous

## TORCHBEARERS SOCIETY (\$30,000 or more)

Katharine Bachman &  
Kathleen Thurmond  
Bernard & Bonnie Bonn  
John J. Carroll  
Stephen M. L. Cohen  
J. Anthony Downs &  
Jin-Kyung (Kay) Kim  
Mike Elefante  
John Kenneth Felter  
Robert S. Frank, Jr.

Robert A. Glassman  
Geoff & Debbie Howell  
Patrick T. Jones  
Fred & Alicia Kelly  
Daryl Lapp & Cathryn Kato  
Robert & Mona Leveille  
Alex H. MacDonald  
Richard A. Marks  
Joseph E. Mullaney  
Susan W. Murley

Ken Parsigian & Shay Mayer  
Brian & Erin Pastuszinski  
Lia & William Poorvu  
John J. Regan  
Marian A. Tse  
Edward J. Weiss  
Steven & Nancy Wilcox  
Anonymous

## \$10,000 or more

Randall W. Bodner  
Margaret A. Brown  
James C. Burling  
A. William &  
Carol Caporizzo  
David C. Chapin  
Cynthia M. Clarke  
Robert D. & Wendy J. Cultice  
James S. Dittmar  
Alice & Ken Erickson  
Martin M. Fantozzi

Elizabeth Shea Fries  
William P. Gelnaw, Jr.  
Karen & Mark Green  
Michael & Lisa Heyison  
Keith & Andrea Higgins  
Jesse J. Jenner  
Julie & Mark Jones  
Robert D. Keefe  
William A. Knowlton  
R. Bradford Malt  
Joan McPhee

William R. O'Reilly Jr. &  
Elizabeth C. Ross  
Lisa Pirozzolo &  
Christopher Goddu  
Andrea Robinson  
David P. Rosenblatt  
Sarah Rothermel  
Larry & Nancy Rowe  
Michael & Jennifer Sexton  
Gregory D. Sheehan  
John Sigel & Sally Reid

Robert A. Skinner &  
Jody Collins Skinner  
Jennifer C. Snyder  
James G. Sokolove  
Donald R. Steinberg  
Paul R. Sugarman  
Cynthia Vreeland &  
David Jones  
Mary Weber & Robert Duggan  
Jonathan M. Zorn  
Anonymous



## CAMPAIGN CHAIRS



**John E. Cogan Jr.**  
*WilmerHale*



**Marc Gary**  
*Formerly of Fidelity Investments*



**Thomas G. Gunning**  
*EMD Serono, Inc.*



**William F. Lee**  
*WilmerHale*



**John T. Montgomery**  
*Ropes & Gray*



**Regina M. Pisa**  
*Goodwin Procter LLP*

### \$5,000 or more

Peter Alpert & Jill Schwab  
John & Lisa Batter  
Anna E. Dodson  
Daniel W. Halston  
Mary Jo Johnson  
Richard A. Johnston  
Susan A. Johnston  
Adam Kahn

William R. & Amy D. Kolb  
Francis C. Lynch  
Michelle D. Miller  
Stephen H. Oleskey  
Joe Savage  
Elliot M. Surkin  
Anonymous

### \$1,000 or more

William B. Asher  
John G. Brooks  
Mark H. Burak  
John Englander  
Christian M. Hoffman  
Steve Jonas & Holly Clarke  
Chris Klem  
Winifred I. Li

Eric & Susan Marandett  
Diane B. Patrick  
Mark A. Rubenstein  
Richard & Joann Southgate  
Wayne Stoner  
Scott Webster

## ADDITIONAL DONORS

Jody Forchheimer  
Dave Friedman

Andrew Rothstein  
Wendell Taylor

## EMERGING LEADERS SOCIETY

### \$15,000 or more

David A. Kluft  
Jerry & Laura Tichner

### \$7,500 or more

Lia S. Der Marderosian  
Mark C. Fleming  
James W. McGarry  
Alison Foote Reif  
Graham Robinson

### \$3,000 or more

Michael D. Beauvais  
Jay DeYoung  
Martha & Timothy Frahm  
John J. Hitt  
Robert G. Jones  
Vasiliki Kalaitzidis  
Jeffrey Katz  
Scott & Jennifer Kirwin

Peter Kochansky &  
Lauren Dias  
Michael & Amy MacDougall  
Martha Mazzone  
Tara C. McCarthy &  
Peter D. Stahl  
Susan C. McSwain  
Matt & Amy Mugherini

Suzanne Murray  
John D. & Margaret A. Norberg  
Karen O'Toole  
Michael J. Summersgill  
Anne & Brian Trinquet  
Daryl Wiesen &  
Kathleen Lenihan

### \$1,500 or more

Christian A. Atwood &  
Dr. Susan A. O'Bell  
Steven & Martha Barrett  
Kevin Batt  
Stacey A. L. Best  
Brandon L. Bigelow  
Tom Brown  
James Burns  
Berry & Michael Cappucci  
Jennifer Carpenter Boylan  
William C. Coffey  
Bryan Connolly  
Jason & Adrien Duncan  
Daniel Gallagher & Mimi Fong

Andrew & Julie Gallo  
Sarah Gill  
Scott Goebel  
David P. Halstead  
Donna Stoehr Hanlon  
Carol Head  
Kathy & Jim Henry  
Jillian Hirsch  
Elizabeth A. Houlding  
Mark Jensen & Lisa Martin  
Matthew N. Kane  
Adam J. Kessel  
Lawrence Kolodney  
Jason L. Kropp

Anna Kuznetsova  
Neil G. McGaraghan  
Nicole L.M. Parsons  
Jennifer M. Perrigo &  
Kevin B. Currid  
Devin Smith  
Megan F.S. Tipper  
Rebecca Tyler  
Michael R. Weissman  
Christine Wichers  
Phil Zachos  
Anonymous (2)

## Harmonix Shareholders Make \$2.6 Million Gift to GBLS for Endowment

Greater Boston Legal Services has received more than \$2.6 million to create an endowment from 72 donors who won a large settlement after resolving a major civil case recently against Viacom International.

The Harmonix stockholders experienced first-hand the benefit of being represented by competent counsel in the complex process of seeking justice and securing their rights against an opponent with substantially greater resources. Creating the endowment is their way of making a lasting gift to assist GBLS in helping those who are at a significant disadvantage because they cannot afford a lawyer in non-criminal cases.

The stockholders group from Cambridge-based Harmonix is endowing the Harmonix Stockholders Community Fellowship to work with GBLS' community partners and clients in neighborhood settings.

"As endowments are meant to last forever, making a gift of this type enables GBLS to plan for its future," said Jacqueline J. Bowman, Executive Director of GBLS. "Thanks to the Harmonix stockholders, this gift will allow us to train the next generation of public interest lawyers and continue to provide much-needed services."

A portion of the original gift will also be used to create and support a position for a senior attorney who will conduct major litigation on behalf of low-income persons in consumer-related matters such as truth-in-lending issues, payday loans and other usurious practices that can trap them in poverty.

"We are very grateful to the Harmonix stockholders for choosing GBLS as the recipient of this gift," said Melissa Tearney, President of the GBLS Board of Directors. "The number of people who need

and qualify for free civil legal services has been expanding while traditional sources of funding have been shrinking. We have much work to do to obtain unrestricted operating funds to support our program overall. However, by increasing our endowment, the Harmonix stockholders gift achieves a measure of sustainability for the future. I think it is a credit to the Harmonix stockholders that they want to ensure fairness for all in the justice system."

Bernie Bonn, an attorney and GBLS board member, said that he hopes that the gift by the Harmonix stockholders will prompt others outside the legal profession to give to GBLS. "You don't have to be a lawyer to appreciate and support the work that GBLS does," Bonn said. "It's a matter of fairness. Providing experienced counsel in civil matters for indigent clients is the best way to level the playing field and to protect the vulnerable."

**"It's a matter of fairness. Providing experienced counsel in civil matters for indigent clients is the best way to level the playing field and to protect the vulnerable."**

## IN-KIND DONATIONS

Thank you to the individuals listed below for their generous gifts of goods or services in 2013.

Osama Almughrabi  
Michael B. Elefante  
Charles Fayerweather  
Jonna Hopwood  
Christopher Logue

Jadie Lussier, Plan b Salon  
Gregory Massing  
Sarah McClean  
Katie Milton  
S.D.

Susan Scheiner  
Inessa Shur  
Victoria Spetter  
Keto Tan  
Tsering Wongmo

*In addition to the individuals listed above, GBLS would like to extend a **special thank you** to Pillsbury Winthrop Shaw Pittman LLP for donating nearly \$250,000 in attorney time and case costs (i.e., depositions) in 2013. The firm provided critical assistance on an Asian Outreach Unit case involving 16 daycare workers, some of whom are owed thousands of dollars in unpaid wages.*

## THE GBLS LEGACY SOCIETY

Members of the GBLS Legacy Society make a lasting commitment to legal services by including GBLS in their wills or other planned giving vehicles.

John J. Carroll  
Philip K. Hamilton  
Richard A. Marks  
Joseph E. Mullaney  
Stephen H. Oleskey  
David W. Rosenberg  
Robert A. & Sloan K. Sable  
Richard W. Southgate  
Toni G. Wolfman  
Stephen S. Young

*For more information on how to become a member of the GBLS Legacy Society, please contact your attorney, financial advisor, or Anna Marie Ventura at GBLS (617-603-1565).*



## COMMEMORATIVE GIFTS

A donation was made in honor of  
**Arbella Insurance Foundation**  
by General Reinsurance Corporation

A donation was made in honor of  
**Dennis Delaney**  
by Elizabeth Steele

A donation was made in honor of  
**Mike Elefante**  
by Elizabeth Steele

Donations were made in honor of  
**Ellen Gabriel's birthday**  
by  
Elizabeth A. Angell  
Nancy Ballantyne  
Susan Beck  
Carolyn B. Caragliano  
Marga Dieter  
Rhonda Fadume  
Sandra A. Halperin  
Janet S. Hillel  
Melanie Karp  
Sousan Khajavi  
Elisa Orengo  
Suzanne H. Pasch  
Esther M. Stacy

A donation was made in honor of  
**Wynn Gerhard**  
by Marilyn Newman & Francis Ganong

A donation was made in honor of  
**Lili Ibara**  
by Stephen Puopolo

A donation was made in honor of  
**Management of InterSystems**  
by Robert J. Nagle

A donation was made in honor of  
**Dan Manning**  
by S. Zelda & Elkan Gamzu

A donation was made in honor of  
**Mara Eisenbaum Mendell**  
by Harry Eisenbaum & Claudia Gilman  
Eisenbaum Fund, a Donor Advised Fund  
of Combined Jewish Philanthropies of  
Greater Boston, Inc.

A donation was made in memory of  
**Sheldon "Shelly" Moskowitz**  
by Samuel B. Moskowitz

A donation was made in honor of  
**Beata Panagopoulos**  
by Athanassios Panagopoulos

A donation was made in honor of  
**Diane Paulson**  
by Janice and Leonard Kaplan

Donations were made in memory of  
**Daniel E. Rothenberg**  
by  
Thomas J. & Midge DeSimone  
Barbara Ruchames  
Gail A. Sullivan  
W/S Development Associates LLC  
Jeanne Yozell

Donations were made in celebration of  
the wedding of  
**Sarah Sable and Justin Thomson**  
by  
Ed Pelavin  
Susan Boiko  
Ronald Newman

A donation was made in memory of  
**Jerry Wasserman**  
by Anonymous

A donation was made in honor of  
**Song-Mee Yoon-Smith**  
by The Pinkerton Foundation

*While we made every effort to include all donors in this report, if we have inadvertently omitted any donor, please accept our apologies and contact Zoe Cronin, Director of Annual Giving, at 617-603-1643 or zcronin@gbbs.org for record correction.*

# WE COULDN'T DO IT WITHOUT YOU

## COMMUNITY PARTNERS

Massachusetts Legal Assistance Corporation  
Commonwealth of Massachusetts  
Department of Public Health  
Executive Office of Public Safety  
Massachusetts Office for Victim Assistance  
Office of the Attorney General  
United Way of Massachusetts Bay and Merrimack Valley  
Boston College Legal Assistance Bureau  
Boston University Law School  
Peggy Browning Fund  
Center for Public Representation  
Chelsea/Revere/Winthrop Home Care Center, Inc.  
City of Boston  
Commission on Affairs of the Elderly  
Department of Neighborhood Development  
Office of Jobs and Community Services  
City of Cambridge  
City of Somerville  
Community Economic Development Corporation  
Corporation for National and Community Service – AmeriCorps

Equal Justice America  
Equal Justice Works  
Harvard Legal Aid Bureau  
HomeStart  
Lutheran Social Services of New England  
Minuteman Senior Services  
Mystic Valley Elder Services  
National Employment Law Project  
National Network to End Domestic Violence  
Northeastern University School of Law  
Project Hope  
Rosie's Place  
The Second Step  
Somerville Cambridge Elder Services  
Somerville Homeless Coalition  
South Shore Elder Services  
Union of Minority Neighborhoods  
U.S. Department of Housing and Urban Development  
U.S. Department of the Treasury  
Internal Revenue Service

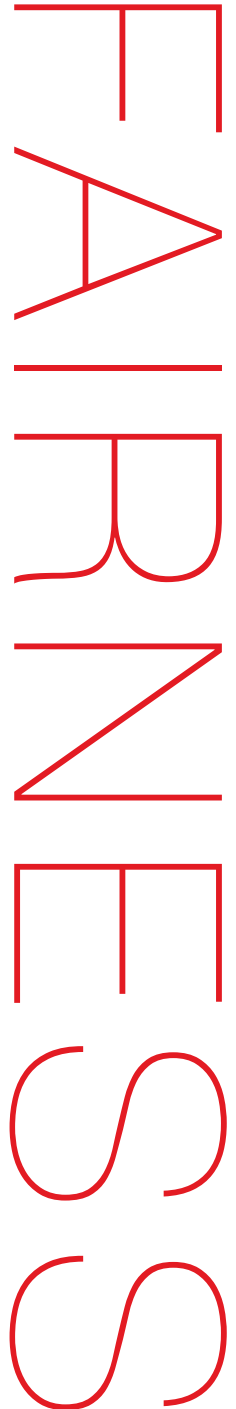
## FOUNDATION AND CORPORATE PARTNERS

Arbella Insurance Foundation  
Boston Bar Foundation  
Herb Block Foundation  
Bushrod H. Campbell and Adah F. Hall Charitable Fund  
Citizens Bank Foundation  
Jane Cook Charitable Trust  
Eastern Bank Charitable Foundation  
Family Values at Work  
Charles H. Farnsworth Charitable Trust  
Gardiner Howland Shaw Foundation  
Lawrence Model Lodging Houses Trust  
Massachusetts Bar Foundation  
The Medwed Foundation  
Phyllis McGillicuddy Charitable Trust  
George H. and Jane A. Mifflin Memorial Fund

New Directions Foundation  
Oak Foundation  
Albert E. Pillsbury Trust  
Sailors' Snug Harbor of Boston  
TD Charitable Foundation  
United Nations Voluntary Fund for Victims of Torture,  
High Commissioner for Human Rights  
Anonymous (3)

## EASTERN REGION PARTNERS

Community Legal Services and Counseling Center  
Legal Advocacy & Resource Center  
MetroWest Legal Services  
Volunteer Lawyers Project of the Boston Bar Association



## THANK YOU! PROGRAMS

Students assisted GBLS' clients and staff through programs sponsored through the following schools.

Bard College  
Barnard College, Columbia University  
Boston College Law School  
Boston Community Leadership Academy  
Boston University  
Boston University School of Law  
Boston University School of Social Work  
Brandeis University  
Brooklyn Law School  
Eastern Washington University  
Florida International University College of Law  
Gettysburg College  
Harvard College  
Harvard Law School  
Harvard University  
Lasell College  
Lesley University  
Massachusetts College of Liberal Arts

Massachusetts Institute of Technology  
New England Law  
Northeastern University  
Northeastern University School of Law  
Suffolk University  
Suffolk University Law School  
Temple University Beasley School of Law  
The College of Wooster  
The Fletcher School of Law and Diplomacy,  
Tufts University  
The University of Michigan Law School  
University of Connecticut School of Law  
University of Massachusetts Boston  
University of Virginia School of Law  
Wheaton College  
William & Mary Law School  
Yale University



Photo credit: Taramattie Doucette

This 12-year-old, far right, has severe chronic asthma and needs medication to stave off asthma attacks. Even short aggressive treatments with corticosteroids did not provide her with extended symptom-free periods. Despite this, her Supplemental Security Income (SSI) benefits were cut because the Social Security Administration claimed her health had improved. Her mother, far left, filed for reconsideration of the decision but was denied. She came to GBLS for assistance on how to present her daughter's case at an Administrative Law Judge hearing. She was referred to GBLS' Children's Disability Project (CDP). Harvard Law intern Maureen Slack, center, took the case on her very first day with CDP and prepared for the hearing. Maureen's review of the medical records showed that the child's asthma is pervasive, chronic, severe, and disabling. Maureen, supervised by CDP's director, Taramattie Doucette, argued to the judge that the child continued to meet the criteria for benefits and the judge reinstated them. Thanks to Maureen's advocacy, the young girl has been able to resume her critical medical care.



## Blue Cross and Blue Shield of Massachusetts Volunteers Help Callers Seeking Legal Assistance

Many days, there are more people calling GBLS' intake line than we are able to answer. Sixteen members of the law department at Blue Cross and Blue Shield of Massachusetts (BCBSMA) answered GBLS' call for help. Twice a month, they volunteer to take calls from people who otherwise might be on hold for hours and then learn that they have to call back another day. The volunteers ascertain eligibility and then refer clients to GBLS and its regional partners or to a member of the Legal Advocacy & Resource Center (LARC) for brief advice and referral.

Stephanie Lovell, BCBSMA Senior Vice President and General Counsel, says, "The BCBSMA Law Department's partnership with GBLS and LARC has provided a unique opportunity for our

lawyers and other legal professionals to assist an underserved segment of our community. The program has strengthened our department's understanding of the daunting legal challenges faced by those with limited resources as well as our respect for the legal professionals who assist those clients on a regular basis."

GBLS is looking for more volunteers for the *pro bono* intake project. When asked if they had any advice for others considering volunteering, the BCBSMA group agreed: "Just do it. I didn't know how rewarding it would be." If your corporate law department or law firm would like more information, please contact Anna Marie Ventura at 617-603-1565.



Photo credit: Anna Marie Ventura

Volunteers from the Blue Cross and Blue Shield of Massachusetts Law Department who provide intake for GBLS.

Ensure fairness for all in the justice system.  
Go to **[www.gbls.org](http://www.gbls.org)** and click on "Donate Now!"

# VOLUNTEER SUPPORT

## VOLUNTEER ATTORNEYS

The following individuals, in addition to many law students, volunteered substantial commitments of time in 2013 to GBLS and its clients. Their service, as reported in the Financial Statements, was valued at \$7,240,878. We are also very grateful to the many *pro bono* attorneys, too numerous to list here, who handled GBLS cases at their firms.

Gary Allen  
Michael Altman  
Elizabeth Badger  
Peter Beebe  
Vincent Iron Brodbeck  
Kevin Canty  
Danielle Charles  
Susan Chimene  
Rose Eileen Connolly  
Elizabeth Cornwall  
Thomas Crice  
Katie D'Agostine  
Sarah DeLorey  
Russell Dunning  
Rosalie Fazio  
Harrison Fitch

Brittany Forgues  
Ellen Gabriel  
Aquilah Gantt  
Deanna Georgenes  
Jane Gottschalk  
Guenter Hiort  
Joseph Hunt  
Valerie Jackson  
Ashley Jones-Pierce  
Ksenia Khaimova  
Nam Hee Kim  
Jessica Lee  
Michelle Lee  
Song Ji Liu  
Linda McGuire  
Timothy Morris

Joseph Mullaney  
Hieu Nguyen  
Cynthia Pfanni  
Geraldine Pierre  
Richard Rafferty  
Domenic Russo  
Robert Sable  
Jane G. Smith  
Jane Sugarman  
Natacha Thomas  
Matthew Thomson  
Hilary Thrasher  
Melanie Todman  
Rebecca Waisanen  
Michael Whalen

### FELLOWS

Andrea Carrillo  
Stephanie Cote  
Ventura Dennis  
Thomas Fowler  
Liliana Ibara  
Juan Lopez  
Amanda Loring  
Tram Nguyen  
Alexa Rosenbloom  
Kendra Sena  
Rachel Smit  
Katherine Tarpley

## VOLUNTEERS

We are grateful to the following volunteers who provided administrative or paralegal services during the year.

Jordan Berg Powers  
Francesca Contreras  
Joanne Daniels-Finegold  
Frantz Desir

Amy Fripp  
Paige Gunning  
Ronda Jackson  
Edisonia Kook

Robert Lannon  
Leslie Smith-Tullar  
Maria Valencio

## CORPORATION FOR NATIONAL & COMMUNITY SERVICE – AMERICORPS

Elizabeth Alfred  
Sarah DeLorey  
Sheila Gholkar

Colleen Hibbert  
Elizabeth Mickle  
Susan Malouin

Casey Shupe  
Kimberly Vo

## BOARD MEMBERS

Yessenia Alfaro  
Isaac Bantu  
Elaine Bennett  
Timothy Blank  
Ruth Bodden  
Bernard Bonn  
John Bowman  
Stephen Brake  
Harold Brown  
Stephanie Brown  
Shaquella Butler  
John Carroll  
Myrnairis Cepeda  
Cynthia Clarke  
William Connolly  
Janyce Cunningham  
Allene Curry  
Joanne Daniels-Finegold  
Ronald Davids  
Thomas DeSimone  
Patrick Dinardo  
Rita Dixon  
John Donohue

Michael Elefante  
John Felter  
Timothy French  
Tracy Gibson  
Louis Goodman  
Dorothea Guild  
Thomas Gunning  
Philip Hamilton  
Ellen Harrington  
Catherine Harris  
Susan Hartnett  
Regina Healy  
Lawrence Heffernan  
Kay Hideko Hodge  
Geoffrey Howell  
Ronda Jackson  
Ronica Jackson  
Fred Kelly  
Daryl Lapp  
Danford Larkin  
Paulina Laurency-Mathis  
Donald Leka  
Robert Leveille

Kenneth Luke  
Alex MacDonald  
Jane Mallei  
Elaine Marin-Ruff  
Richard Marks  
Wendy Mason  
Neil McGaraghan  
Howard Medwed  
Shams Mirza  
Jeffrey Mittleman  
Samuel Moskowitz  
Edward Naughton  
Benjamin Perez  
Margo Perez  
Salea Perry  
David Phelan  
Vincent Pisegna  
John Powers  
Alison Reif  
Alan Rom  
David Rosenberg  
David Rozenson  
Jeffrey Rudin

Robert Sanoff  
Laura Schneider  
Adam Sisitsky  
Eve Slattery  
Suzanne Small  
W. Thomas Smith  
James Sokolove  
Franklin Stearns  
Beverly Steed  
Jeffrey Stoler  
Melissa Tearney  
Arthur Telegen  
Jerome Tichner  
Magalis Troncoso Lama  
Andrew Troop  
Marian Tse  
Sherri Tucker  
Donald Vaughan  
John Ward  
Edward Weiss  
Steven Wilcox  
Alma Woodberry  
B. Andrew Zelermyer



## CORPORATION MEMBERS

Jennifer Antoniazzi  
Carey Bertrand  
Richard Bluestein  
Bernard Bonn  
John Bowman  
W. Lincoln Boyden  
Gregory Bulger  
Myrnairis Cepeda  
John Cogan  
Zachary Coseglia  
Andrew Culbert  
Larkin Danford  
Joanne Daniels-Finegold  
Jonathan Davis  
W. Lee Dunham  
Thomas Dwyer  
Michael Elefante  
Pam Feingold  
Steven Fischman  
Rhys Gardiner  
Deidre Giblin  
Marvin Gilmore  
Lena Goldberg  
Katherine Haffner  
Susan Hartnett  
William Haynsworth  
Regina Healy

Daniel Heffernan  
Robert Hildreth  
John Hitt  
Kay Hideko Hodge  
David Kluft  
Lori Lander  
Danford Larkin  
Paul Lee  
William Lee  
Donald Leka  
Richard Marks  
Susan Maze-Rothstein  
Martha Mazzone  
John Montgomery  
Robert Muldoon  
Joseph Mullaney  
Robert Nagle  
John Norberg  
Kevin O'Flaherty  
Stephen Oleskey  
David Rosenberg  
David Rozenson  
Mary Ryan  
Saul Schapiro  
Thomas Shapiro  
Adam Sisitsky  
Robert Smith

Richard Southgate  
Robert Spangenberg  
Gary Spiess  
H. Michael Stevens  
Paul Sugarman  
Jeffrey Swope  
May Takayanagi  
Arthur Telegen  
Jerome Tichner  
Anne Trinque  
William Tyler  
Sara Walker  
Walter Winshall  
John Wofford  
Toni Wolfman  
Stephen Young  
Albert Zabin

## STAFF

Carolina Africano  
Yanick Aldin  
Lourdes Alvarez  
Sarah Anderson  
Miriam Aponte  
Valenda Applegarth  
Luz Arévalo  
Elba Aviles  
Stefanie Balandis  
Daniel Bartley  
Richard Bauer  
Manisha Bhatt  
Jacquelynne Bowman  
Lisa Bradley  
Dina Brownstein  
May-Lynda Calixte  
Maria Casas  
Rita Cheresnowsky  
Nadine Cohen  
Elizabeth Crimmins  
Zoe Cronin  
Francis Czulpinski  
Karen Dobak  
Taramattie Doucette  
Mercer Edwards  
Noriko Fahey  
Maria Fernandes

Deborah Filler  
Brian Flynn  
Mary Frasca  
Linda Garcia  
Wynn Gerhard  
Lizbeth Ginsburg  
Maritza Gomez  
Yanira González  
Linda Goodwin  
Monica Halas  
Shelly Harter  
Susan Hegel  
Abbe Hershberg  
Margaret Jean  
Ann Jochnick  
Patricia Kaczmarek  
Todd Kaplan  
Nancy Kelly  
Jefferson Kidd  
Paula Kostachuk Starr  
Linda Lank  
Patricia Levesh  
Sarah Levy  
Lisa Locher  
Nancy Lorenz  
Linda Lown-Klein  
Anne Mackin

Melanie Malherbe  
Daniel Manning  
Sandra Manzanares  
Cynthia Mark  
Sonia Márquez  
Donna McCormick  
James “Mac” McCreight  
Marina Mejía  
Maria Mendonça-Costanzo  
Mithra Merryman  
Naomi Meyer  
Alexander Mitchell-Munevar  
Carla Moniz  
Yahaira Ortiz  
Benjamin Pannell  
Diane Paulson  
Jeffrey Purcell  
Pauline Quirion  
Armando Ramos  
Martha Ramos  
Audrey Richardson  
Adoración Rivas  
Yolanda Rivera  
Jane Rocamora  
Elba Rodriguez  
Jay Rose  
Constance Rossetti

Blanca Ruiz  
Eneida Sánchez  
Levi Sanders  
Maureen Serio  
Ellen Shachter  
Brenda Smith  
Sherry Smith  
Lauren Song  
Quinten Steenhuis  
Beverly Teal  
Patricia Tellis-Warren  
Jeroboam Tisme  
Marisol Torres  
Elizabeth Toulan  
Margaret Turner  
Juan Valdes  
Steven Valero  
Anna Marie Ventura  
Gerald Wall  
Jack Ward  
David White  
John Willshire Carrera  
Colleen Wilson  
Sandy Yeung  
Mark Younkle  
Barbara Zimbel

Massachusetts  
Legal  
Assistance  
Corporation



United Way  
of Massachusetts Bay  
and Merrimack Valley

# WE C T S U R



# FAIRNESSES



197 FRIEND STREET, BOSTON MA 02144

GREATER BOSTON LEGAL SERVICES  
2013 ANNUAL REPORT